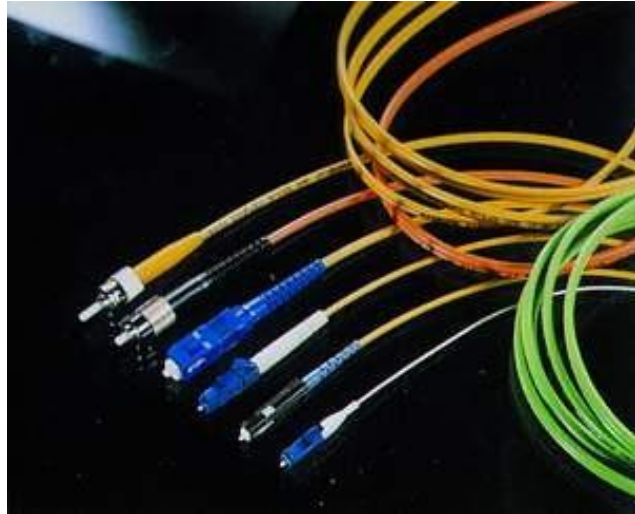


Applications

Date communication;
 Telephone communication Network;
 Test equipment;
 LAN;
 Fiber optic CATV;
 Access Network.



1. FC OR SC Fiber Optic Connector

Features

UPC, APC polishing

High return loss, Low insertion loss

High reliability and stability

Specifications				
Test Item		Test Condition	Value(dB)	
			UPC	APC
Optical Performance	Insertion Loss	1310nm LED light source	<0.3	<0.3
	Return Loss	1310nm LD light source	>50	>60
Environmental Performance (Max. Insertion Loss change)	High temperature	+85°C, 168 hours	<0.2	
	Temperature Cycle	-40-+75°C, 21 Cycles 168 hours	<0.2	
	Humidity Aging	+75°C, 95% R.H, 168 hours	<0.2	
	Humidity/Condensation Cycling	-10-+65°C, 90%~100% RH, 14 cycles 168 hours	<0.2	
Mechanical Performance (Max. Insertion Loss change)	Vibration	10-55Hz, 1.5mm(p-p)	<0.2	
	Flex	0.9kgf, -90°~+90° repeat for 100 cycles	<0.2	
	Torsion	1.35kgf, ±900o, 10times	<0.2	
	Withstand tensile	90N, 10min	<0.2	
	Drop	H=1.5M, Total of 8 drops	<0.2	
	Exchangeability	Randomly	<0.2	
	Durability	500 times	<0.2	

2. ST Fiber Optic Connector

Features:

PC, UPC polishing

High return loss, Low insertion loss

High reliability and stability



Specifications			
Test Item		Test Condition	Value(dB)
			UPC
Optical Performance	Insertion Loss	1310nm LED light source	<0.3
	Return Loss	1310nm LD light source	>50
Environmental Performance (Max. Insertion Loss change)	High temperature	+85°C, 168 hours	<0.2
	Temperature Cycle	-40-+75°C, 21 Cycles 168 hours	<0.2
	Humidity Aging	+75°C, 95% R.H, 168 hours	<0.2
	Humidity/Condensation Cycling	-10-+65°C, 90%~100% RH, 14 cycles 168 hours	<0.2
Mechanical Performance (Max. Insertion Loss change)	Vibration	10-55Hz, 1.5mm(p-p)	<0.2
	Flex	0.9kgf, -90°~+90° repeat for 100 cycles	<0.2
	Torsion	1.35kgf, ±900o, 10times	<0.2
	Withstand tensile	90N, 10min	<0.2
	Drop	H=1.5M, Total of 8 drops	<0.2
	Exchangeability	Randomly	<0.2
	Durability	500 times	<0.2

3. LC OR MU Fiber Optic Connector

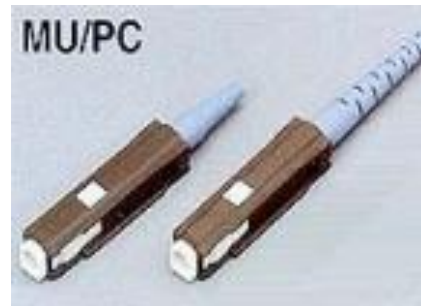
Features

UPC, APC polishing;

Push-pull structure;

High return loss, Low insertion loss;

High reliability and stability Compact size .



Specifications				
Test Item		Test Condition	Value(dB)	
			UPC	APC
Optical Performance	Insertion Loss	1310nm LED light source	<0.3	<0.3
	Return Loss	1310nm LD light source	>50	>55
Environmental Performance (Max. Insertion Loss change)	High temperature	+85°C, 168 hours	<0.2	
	Temperature Cycle	-40-+75°C, 21 Cycles 168 hours	<0.2	
	Humidity Aging	+75°C, 95% R.H, 168 hours	<0.2	
	Humidity/Condensation Cycling	-10-+65°C, 90%~100% RH, 14 cycles 168 hours	<0.2	
Mechanical Performance (Max. Insertion Loss change)	Vibration	10-55Hz, 1.5mm(p-p)	<0.2	
	Flex	0.6kgf, -90°~+90° repeat for 100 cycles	<0.2	
	Torsion	1.35kgf, ±900o, 10times	<0.2	
	Withstand tensile	70N, 10min	<0.2	
	Drop	H=1.5M, Total of 8 drops	<0.2	
	Exchangeability	Randomly	<0.2	
	Durability	500 times	<0.2	

4. MTRJ Fiber Optic Connector

Features

Designed to meet TIA/EIA 568B.3

MT/RJ Plug is half the size of duplex SC connectors

Intuitive RJ-45 type latching mechanism

MT/RJ Jack is installable in conventional RJ-45 faceplates and outlet boxes



Specifications			
Test Item		Test Condition	Value(dB)
Optical Performance	Insertion Loss	1.3um LED light source	Typical 0.3
	Return Loss	1.3um LD light source	> 35
Environmental Performance (Max. Insertion Loss change)	High temperature	+60 o C, 96 hours	<0.2
	Low temperature	-10 o C, 96 hours	<0.2
	Temperature Cycle	-10-+60 o C, 12 cycles, 96hours	<0.2
	Humidity,	+40 o C, 95%R.H	<0.2
	steady state	96 hours	<0.2
Mechanical Performance (Max. Insertion Loss change)	Vibration	10-55Hz, 1.5mm(p-p)	<0.2
	Flex	0.6kgf, -90 ° ~ + 90 ° repeat for 100 cycles	<0.2
	Torsion	1.5kgf, ±180 ° , 10times/min, 200 cycles	<0.2
	Withstand tensile	70N , 10min	<0.2
	Drop	H=1.5M, Total of 8 drops	<0.2
	Exchangeability	Randomly	<0.2
	Durability	500 times	<0.2